

# THE **D**EMOCRATIC VOICE

## December 2023 Newsletter

Note: if a link doesn't open, simply copy and paste in your browser.

### **Congratulations to the Newly Elected 2024 LCDP Executive Board. 2024 will be a very busy year, but we have a great team to lead us!**

Chair: William Garcia  
Vice Chair: Tina Pohlman  
Secretary: Carla Peña  
Treasurer: Doug Zuege  
At-Large Members:  
Ed Burgess  
Hannah Dull  
Fred Giese  
Paul Kruse  
Kelly Leibold

### **Thank you to outgoing Executive Board Members Vice Chair Kristie Tweed and Treasurer Cathy Van Maren**

2023 was a very successful year for LCDP and Democrats around the state and we thank you for all of your hard work and support!

### **LCDP Volunteers Needed**

As the crucial 2024 election nears, we are in need of volunteers to help ensure we keep Wisconsin Blue. There are many ways to help!

Take the LCDP 2024 Volunteer Time and Talent Survey today and find out how you can help the Democrats in 2024! Take the survey at <https://forms.gle/MqWjK1NiS-1BLZukp9>

### **Help for Candidates:**

DPW and other organizations are rolling out a lot of help for people interested in running for office at any level of government. Encourage people interested in running for a

## **Run for Local Office!**

There are elections for County Board, area School Boards and some Municipal races in the county!

We are looking for enthusiastic, progressive candidates for the 2024 local elections.

Are you interested in running for local office? We have an election coming up in April of 2024, and the time to start planning is now. We would love for you to consider running for County Board, area city councils and local school boards. We have a lot of help to offer you. If you have any questions or would like more information on any of our assistance programs, contact me at [chair@laxdems.com](mailto:chair@laxdems.com)

seat to attend some of these training sessions.

### **DPW Run For Office Toolkit:**

Nominate yourself or another person through the WisDems Candidate Recruitment Form and they'll be in touch through this interest form. Help us spread the word online with our 2024 Candidate Recruitment Toolkit!

Emerge Wisconsin is an organization that recruits, trains and provides a powerful network to Democratic women who want to run for office. Their cohort-based, six-month training program is unique, and the national EmERGE network is the first state-based training program

exclusively focused on Democratic women, building the bench from the ground up. Applications will officially launch on Labor Day. Apply at <https://wi.emergeamerica.org/training/apply-to-a-future-class/> or nominate someone else at <https://wi.emergeamerica.org/nominate-a-woman/>.

## **Upcoming Events**



**LCDP December LCDP Executive Board Meeting**, Monday, December 4 from 6:30-8:00pm, LCDP Office and Zoom: <https://zoom.us/j/95948945791?pwd=YVJOb2ZGWlZlSm0lQU5nM1lr00zUT09>

**LCDP Holiday Social**, Monday, December 20, 5:00pm-7:00pm, Big Al's Pizza. 115 3rd St. La Crosse, WI.

## **LCDP Holiday Social**

Join us for the LCDP Holiday Social, which takes the place of our regular monthly meeting.

**Monday, December 18**  
**5:00-7:00 pm**  
**Big Al's Pizza**  
**115 3rd Street, Downtown La Crosse**

Join us for food, drinks, fun and socializing with other Democrats!



LCDP Food and Necessity Drive

<https://www.mobilize.us/widems/event/593357/>

La Crosse County Democratic Party Strategy Session

<https://www.mobilize.us/widems/event/593363/>

Sixty Days to Victory! La Crosse Canvass

<https://www.mobilize.us/widems/event/593362/>

## Lots of December Fundraisers for La Crosse Area Candidates!

**Rep. Jill Billings Fundraiser:** Monday, December 1 from 5:00pm-7:00pm at the La Crosse Club. 250 Front St. S. More information and RSVP at <https://secure.actblue.com/donate/billingsdec>

**Tara Johnson Fundraiser for the 3rd CD Congressional Primary:** Thursday, December 7 from 5:30pm-7:30pm at The La Crosse Children's Museum. 207 5th St. in La Crosse. More information and RSVP at <https://secure.actblue.com/donate/dec6lax>

**Rep. Katrina Shankland Fundraiser for the 3rd CD Congressional Primary:** Thursday, December 7 from 5:30pm-7:30pm at Earl's Grocery and Saloon. 401 3rd St. S. More information and RSVP at <https://secure.actblue.com/donate/egsdec7>

**Senator Brad Pfaff Fundraiser:** Monday, December 11 from 5:00pm-7:00pm at the home of Jay Lokken and Ken Riley. More information and RSVP at <https://secure.actblue.com/donate/laxevent>



## LCDP Lending Library

Several LCDP Executive Board members have been working hard to create a Lending Library at the LCDP offices. We have books on politics,

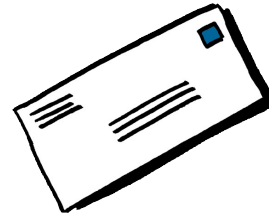
democracy, social justice, anti-racism and more. Visit the LCDP office to borrow any of our books. Or, consider donating books to expand our library and help other members and friends understand what is at stake in the upcoming elections.

## LCDP WEEK OF SERVICE FOOD & NECESSITY DRIVE



The Necessity Drive will take place at the LCDP office (2318 State Rd) and we will be accepting donations from 12pm to 2pm from January 12 - January 18. We look forward to seeing you there!

We cordially invite you to join the La Crosse County Democratic Party Necessity Drive, taking place January 12th through the 18th. This is an opportunity for us to come together as a community and make a real difference in the lives of our fellow Wisconsinites who are struggling to make ends meet. During the Food and Necessity Drive, we will be accepting donations of essential items such as non-perishable food, personal hygiene products, and cleaning supplies. These items will be donated to WAFER to be distributed to local organizations that serve families and individuals in need. We hope you will consider donating whatever you can to help support our community. Whether you are able to give a little or a lot, every contribution makes a difference. Together, we can ensure that everyone in our community has access to the basic necessities they need to thrive.



## Letters to the Editor Project

The 3rd CD has created a Letters to the Editor Ideas document. This document contains two ideas for Letters to the Editor every week, complete with talking points and sources. The document is updated every Friday with new ideas. You can access this document any time at [https://docs.google.com/document/d/11Tla8R4Qpcz9KEDieD0mLZPkfiW2WlaTJjC8II\\_b1bQ/edit?usp=sharing](https://docs.google.com/document/d/11Tla8R4Qpcz9KEDieD0mLZPkfiW2WlaTJjC8II_b1bQ/edit?usp=sharing) or email [chair@3rdcdwisdems.com](mailto:chair@3rdcdwisdems.com) to sign up to have the document emailed to you every Friday.



Hannah Dull and Grant Mathu are working to create a Young Democrats group for La Crosse County! Follow their new Instagram @laxdems or email them at [laxyoungdems@email.com](mailto:laxyoungdems@email.com) for information.

## Our Elected Officials

**Governor Tony Evers**  
Office of the Governor  
115 East State Capital  
Madison, WI 53702  
Ph: 608-266-1212

**Senator Tammy Baldwin**  
717 Hart Senate Building  
Washington, DC 20510  
Ph: 202-224-5653, Fax: 202-224-9787

**Senator Ron Johnson (R)**  
328 Hart Senate Office Building  
Washington, D.C. Office Building  
Ph: 202-224-5323

**Congressman Derrick Van Orden (R)**  
1513 Longworth House Office Building  
Washington, DC, 20515-4903  
Ph: 202-225-5506

**32nd District State Senator Brad Pfaff**  
State Capitol 22 South  
PO Box 7882  
Madison, WI 53707  
Ph: 608-266-5490, Sen.Pfaff@legis.wisconsin.gov

**94th Assembly District Representative Steve Doyle**  
Room 124 North, State Capitol  
P.O. Box 8952  
Madison, WI 53708  
Ph: 608-266-0631 or 888-534-0094  
Fax: 608-282-3694

**95th Assembly District Representative Jill Billings**  
Room 4 West, State Capitol  
P.O. Box 8952  
Madison, WI 53708  
Ph: 608-266-5780

**La Crosse County Clerk**  
Ginny Dankmeyer (Democrat)  
(608) 785-9581

**La Crosse County District Attorney**  
Tim Gruenke (Democrat)  
(608) 785-9604

**La Crosse County Treasurer**  
Amy Twitchell (Democrat)  
(608) 785-9711

## LCDP Executive Board Officers

**Chair: William Garcia**  
(512) 660-2610

**Vice Chair: Kristie Tweed**  
(608) 317-1331

**Treasurer: Cathy Van Maren**  
treasurer@laxdems.com

**Secretary: Carla Peña**  
secretary@laxdems.com

### At-Large Board Members:

**Hannah Dull**  
**Fred Giese**  
**Paul Kruse**  
**Kelly Leibold**  
**Tina Pohlman**

**College Representative: Jake Williams**



## Committee Meeting Times

We really need help with our committees. Please consider joining one of our committees. Information is below!

Committee	Chair	Chair Contact	Meeting Time
Candidate Recruitment	William Garcia	chair@laxdems.com	3:00pm on the 2nd Thursday of the Month
Communications	William Garcia	chair@laxdems.com	6:30pm on the 4th Monday of every month
Constitution and Bylaws	Carla Peña	secretary@laxdems.com	5:00pm on the 4th Monday of every month
Events/Outreach	Fred Giese	giese.white@gmail.com	6:30pm on the 2nd Monday of every month
Fundraising	Cathy Van Maren	treasurer@laxdems.com	2:00pm on the last Thursday of the month
Membership	Kristie Tweed	vicechair@laxdems.com	4:00pm on the 2nd Wednesday of the month.

## Follow the LCDP on



FORMERLY  
**twitter**

@lacrossedems

and



Instagram

@lacrossedems

## How to sign up for monthly contributions

Did you know that you can easily set up a monthly donation to LCDP? This is a fast and easy way to help our party, our candidates and our volunteers. Just go to <https://secure.actblue.com/donate/lcdp2022office> and select Yes, Count Me In! under the Make It Monthly tab on the donation page. Even \$5 a month is of real help.

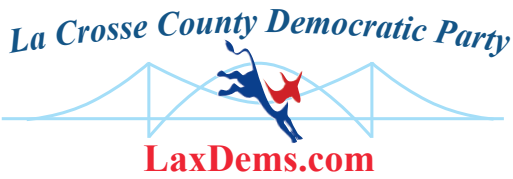
## LCDP Podcast

Have you checked out The LCDP podcast The Democratic Voice, produced in conjunction with WIZM news? Listen and subscribe for opinions and updates of what is happening in La Crosse County. <https://www.wizmnews.com/the-democratic-voice-with-william-garcia/>



## Renewing Your Membership!

You can renew your membership using the membership form found at the end of this newsletter. If you are receiving this newsletter via mail, please look at your mailing label to see when your membership expires. Thank you for your continued support! Or just visit <https://laxdems.com/join-the-party/> and fill out the form (it is the same form to join or renew) and pay online.



La Crosse County Democratic Party  
P. O. Box 1861  
La Crosse, WI 54602 -1861

Paid for by the La Crosse County Democratic Party. The contents herein are not authorized by any candidate or candidate's committee.

Membership in the La Crosse County Democratic Party ensures we have candidates who share our values, the infrastructure they need to campaign and the support they need to win elections. Consider joining the party today!

You may send a contribution to:  
LCDP, P. O. Box 1861, La Crosse, WI, 54602-1861.  
For online contributions go to our website [www.laxdems.com](http://www.laxdems.com).

Thank you.

There are three ways to join through the LCDP:

1. Print and mail your check and the form (available also at [tinyurl.com/lcdpmbform](http://tinyurl.com/lcdpmbform))
2. Visit [laxdems.com/join-the-party](http://laxdems.com/join-the-party) and complete your application and payment online.
3. Come to a LCDP event and complete the process and payment in person.

Please check the dues structure that applies:

- \$10 Senior, Student, Limited Income
- \$25 General Membership (1 member)
- \$35 Pairs (up to two members)
- \$45 yearly Activist (up to 3 members)
- \$75 yearly (family)
- \$120 Supporting Membership
- \$240 Friend
- \$600 Patron

I would like to support the LCDP with a donation of \$ \_\_\_\_\_

Total Amount Paid \$ \_\_\_\_\_

Make checks payable to:

La Crosse County Democratic Party  
P. O. Box 1861  
La Crosse, WI 54602-1861

You may also donate online: [www.laxdems.com](http://www.laxdems.com).

Paid for by the La Crosse County Democratic Party.

Received \_\_\_\_\_  
Renewal Month \_\_\_\_\_

Name(s) \_\_\_\_\_  
 Name(s) \_\_\_\_\_  
 Address \_\_\_\_\_  
 City \_\_\_\_\_  
 State \_\_\_\_\_ Zip Code \_\_\_\_\_  
 Phone ( ) \_\_\_\_\_  
 Email \_\_\_\_\_  
 \*Occupation \_\_\_\_\_

\*Contributions are not tax deductible for federal tax purposes. State law requires us to use our best efforts to collect and report the name, mailing address, and occupation of individuals whose contributions exceed \$200 in a calendar year.

I'm interested in learning more about DPW caucuses:

- American Indian Caucus
- Black Caucus
- Environmental Caucus
- Labor Caucus
- Latinx Caucus
- LGBT Caucus
- Progressive Caucus
- Rural Caucus
- Veterans' Caucus
- Women's Caucus